

KOREA UNIVERSITY

International Summer Campus



Table of Contents

01	Introduction – KU & ISC/IWC
02	Why KU ISC & IWC?
03	2026 ISC
04	Additional Information

01 | Introduction – KU & ISC/IWC



KOREA UNIVERSITY

1

**Best Private
University
in Korea**

1905

**The oldest
University
in Korea**



KOREA UNIVERSITY in Global Rankings

61st

QS World University
Rankings 2026



12th

QS Asia University
Rankings 2026



10th

QS Asia Sustainability
Rankings 2025



Introduction – KU ISC/IWC

KU ISC/IWC is an academic program designed for international students who wish to explore their **summer** & **winter** for both academic and cultural learning

One of the **largest & best** study abroad programs in the world

Over **140** courses delivered in English (ISC: +90 courses & IWC: +40 courses)

70% International faculty from the world's top universities

Annually more than **3,500** students from **300** institutions in **50** countries

Introduction – KU ISC/IWC

01

Eligibility

- Currently enrolled in an accredited university/college
- Academically motivated high school students (aged 18 + or in year 12)

03

Composition

- Academic credit
- Internship
- Cultural activities
- Buddy Program

02

Period

Short-term academic session

- **IWC** 3 or 4 weeks
- **ISC** 4 or 6 weeks

04

Courses and Credits

1 course = 3 credits
(Max. **IWC** 2 courses & **ISC** 3 courses)

02 | Why KU ISC?

Why KU ISC?

1

**Prominent
Academics**

2

Scholarship

3

Internship

4

**Cultural
Activity**

5

**Buddy
Program**

6

Campus Life

Why KU ISC? - ① Prominent Academics

Faculty

Distinguished faculty from world's top universities

North America

Cornell University

University of Arizona

McGill University

Case Western Reserve University

University of Illinois Urbana-Champaign

Rutgers University

University of Wisconsin-Whitewater

George Washington University

University of California, Davis

Washington State University

Georgia Institute of Technology

Stony Brook University

University of North Carolina at Chapel Hill

Florida State University

Emory University

SUNY-Binghamton

University of Maryland

Oceania

University of Melbourne

University of Sydney

Australian National University

Europe

University of Cambridge

University of Nottingham

University of Vienna

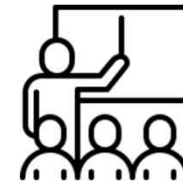
University of Bologna

Why KU ISC? - ① Prominent Academics

Courses

- ✓ **High-standard academic courses covering a wide range of subjects**
- ✓ **Academic Fields**
 - Business & Economics
 - Humanities & Korean Studies
 - Politics & International Business
 - Social Science & Psychology
 - Science & Engineering
 - Korean Language
- ✓ **All courses are delivered in English**
(except for Korean Language classes)

Summer



40 Faculty



90+ courses

Why KU ISC? - ① Prominent Academics

Courses

Different levels of Korean Language courses

Beginning Korean

Basic Korean, No or very limited knowledge

Intermediate Korean

Familiar with basic grammar and vocabulary;
can engage in simple conversations

Advanced Korean

Express about specialized and abstract topics

** [Advanced Korean] will not be offered in the 2026 ISC;
however, it may be opened in the future.*

Why KU ISC? - ① Prominent Academics

Courses - Fees

※ Summer → Max. 3 courses

	1 course	2 courses	3 courses
Application Fee	100,000 KRW (Appx. HKD 545)		
Tuition	1,790,000 KRW (Appx. HKD 9,790)	3,100,000 KRW (Appx. HKD 16,950)	3,700,000 KRW (Appx. HKD 20,250)
Total	1,890,000 KRW (Appx. HKD 10,350)	3,200,000 KRW (Appx. HKD 17,500)	3,800,000 KRW (Appx. HKD 20,790)

Why KU ISC? - ② Scholarship

Re-Enrollment Scholarship

KRW 100,000 (Appx. HKD 545)

Applicants who have previously enrolled in KU ISC/IWC are eligible.

*U21/APRU Scholarship

KRW 200,000 (Appx. HKD 1,090)

Students coming from U21 or APRU member institutions are eligible for scholarship.

Alumni Scholarship

KRW 100,000 per course (Appx. HKD 545)

Applicants with parents who are KU alumni are eligible.

*Academic Excellence Scholarship

Max. KRW 1,500,000 (Appx. HKD 8,200)

Participants who achieved outstanding academic performance in ISC courses. Eligible participants will be individually notified after the program ends.

※(*) indicates that it applies only to the ISC program.

Why KU ISC? - ② Scholarship

*Academic Excellence Scholarship

Students with 3 courses

All A+

1,500,000 KRW
(Appx. HKD 8,200)

Average A

1,000,000 KRW
(Appx. HKD 5,470)

Students with 2 courses

All A+

500,000 KRW
(Appx. HKD 2,730)

※(*) indicates that it applies only to the ISC program.

Why KU ISC? - ③ Internship

※ Only available in the ISC program



4-week Internship program
at various Korean companies or institutions
(before the ISC program begins)

**Build international
social network!**

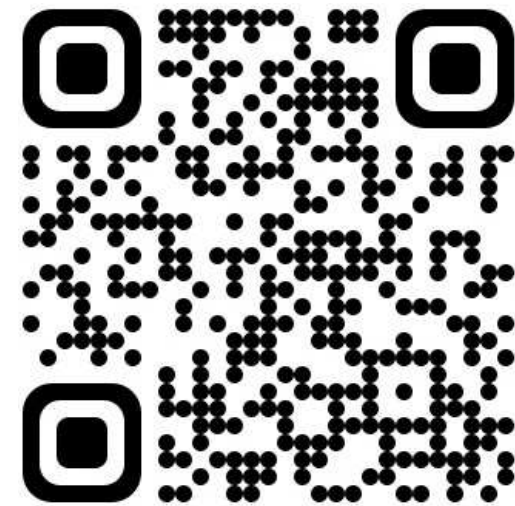
**Gain work experience
opportunities!**

**Get resume credentials
for future careers!**



Why KU ISC? - ③ Internship

※ Only available in the ISC program



*YouTube Channel: @kuisc_iwc

Why KU ISC? - ④ Cultural Activity

A variety of cultural activities → **FREE of charge** for international students

ISC → Approx. 8~9 activities



Why KU ISC? - ④ Cultural Activity

A variety of cultural activities → **FREE of charge** for international students

ISC → Approx. 8~9 activities



Why KU ISC? - ⑤ Buddy Program

You can form lifelong friendships through the buddy program!



Why KU ISC? - ⑤ Buddy Program

Complete missions with your buddy and experience KU & Korean Culture!

Week	Mission	Point
1st week June 28 - July 6	Take a picture together at the main gate Visit Crimson Store or UniStore [Cultural Activity] Lotte World (7/4)	4 6 10
2nd week July 7 - 13	Visit Korea University Museum (백주년기념관 박물관) Teach daily Korean (3 sentences) - video required [Cultural Activity] Ice-skating at the KU Ice Rink (7/11) [Cultural Activity] MBC Studio Tour (7/12)	4 6 10 10
3rd week July 14 - 20	Take a picture at squirrel street with squirrel statue Post photos or video clips on Instagram (+ tag @kuisc.iwc) [Cultural Activity] Taekwondo One-day Class (7/18) [Cultural Activity] DMZ Tour (7/19)	4 6 10 10
4th week July 21 - 27	Take a picture with hands or body expressing KU ISC letter Study together in the KU library [Cultural Activity] Visit Museum, Enjoy Seoul (7/25) [Cultural Activity] Watching Baseball Game (7/25)	4 6 10 10
5th week July 28 - August 3	Writing messages for each other's farewell cards (Rolling paper) Make an activity video and submit [Cultural Activity] Comedy Show (8/1)	4 6 10
6th week August 4 - 7	Send a video message to students (farewell greeting, 1 minute) Submit satisfaction survey	

Category	Mission	Point
Visit	- Cafe	1
	- Restaurant (lunch or dinner together)	3
	- Myeongdong / Han River / Gwangjang Market / DDP / Insadong / Chenggyecheon Stream / Seoul N Tower / Bukchon Hanok Village / Jamsil Lotte Tower / Hongdae / Itaewon	5
	- Jjimjilbang	10
Activity	- Everland / Water Park / Korean Folk Village / Travel other city in Korea	15
	- Night view of Seoul / 4-cut photo	3
	- Board games / Coin Karaoke / Arcade Station	5
	- Exhibition / Escape room / Take a reels and post it on Instagram	10
	- Handcrafting	15
Eat	- KU food (학식)	1
	- KU bread (고대빵) / Street food / Ddeokbokki / Bingsu / Kimbap / Tanghulu	3
	- Han river ramen / Korean BBQ / Late night snacks / Korean traditional pancake (전) / Bibimbap	5
	- Try food delivery	10
etc.	- Take a subway together / Take a bus together	1
	- Seoul city tour bus / Seoul public bike (Ddareungi)	3

※ Mission Sample (2025 ISC)

Why KU ISC? - ⑤ Buddy Program



Why KU ISC? - ⑤ Buddy Program

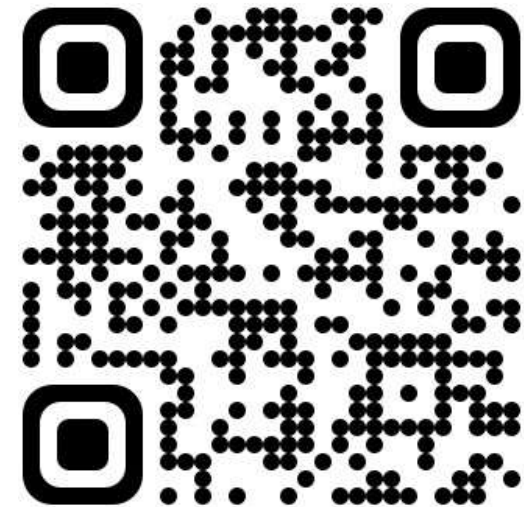


Why KU ISC? - ⑤ Buddy Program



Why KU ISC? - ⑤ Buddy Program

Discover the Buddy Program through our buddy interview video!



*YouTube Channel: @kuisc_iwc

Why KU ISC? - ⑥ Campus Life

On-Campus Housing



CJ I-House



Anam I-House



Frontier Hall

- ✓ **Shuttle Bus Service on Campus** (Between dormitories and lecture buildings)
- ✓ **The placement is on a first-come, first-served basis.**

Why KU ISC? - ⑥ Campus Life

On-Campus Housing - Fees

4-Week Stay (29 nights)

Single Room

International House

Approx. HKD 6,170 KRW 1,128,500

Double Room

International House

Approx. HKD 3,800 KRW 693,500

Frontier House

Approx. HKD 3,650 KRW 664,500

6-Week Stay (42 nights)

Single Room

International House

Approx. HKD 8,840 KRW 1,616,000

Double Room

International House

Approx. HKD 5,400 KRW 986,000

Frontier House

Approx. HKD 5,170 KRW 944,000

- ※ This information is based on the 2026 International Summer Campus. Fees are subject to change in 2027.
- ※ The specific fee may slightly vary depending on the buildings and exchange rate.
- ※ Meal plan is not included. **However, the dormitory has a cafeteria and convenience store, and there are many affordable restaurants near the campus.*
- ※ Dormitory assignments for single or double rooms may vary depending on demand and application order.

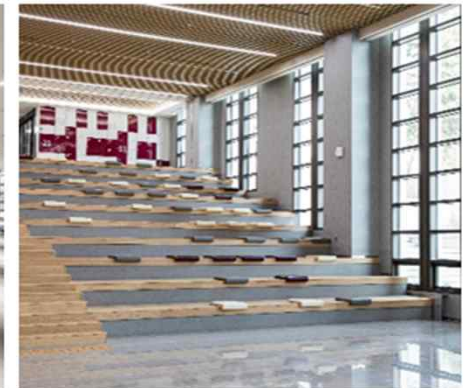
Why KU ISC? - ⑥ Campus Life

Campus



Why KU ISC? - ⑥ Campus Life

Facility



03 | 2026 ISC

2026 International Summer Campus

Schedule

Program Period

June 27 - July 24, 2026 (4W)
June 27 - August 6, 2026 (6W)

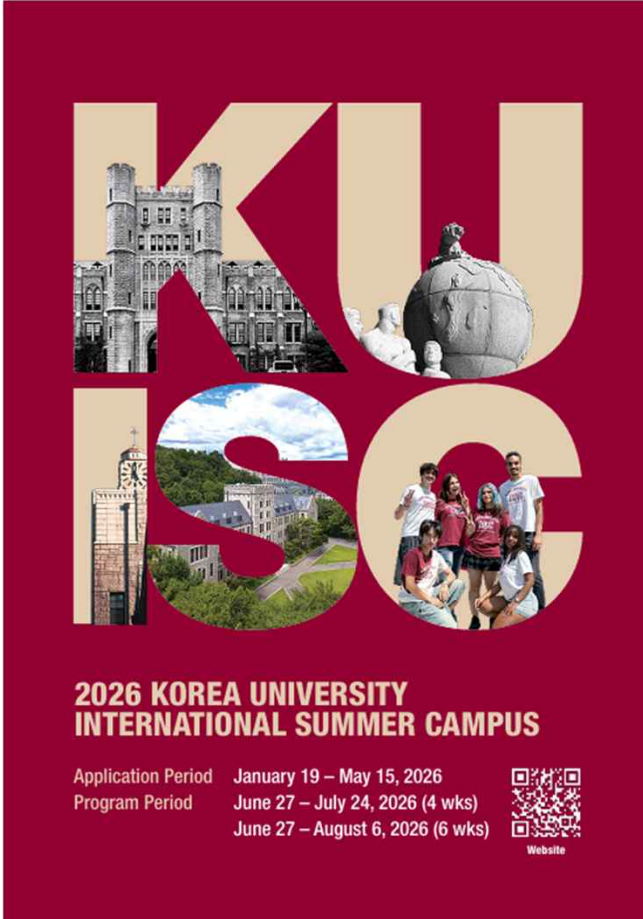
Application Period

January 19 – May 15, 2026

Early Bird Benefit

January 19 – March 13, 2026

200,000 KRW Discount* **Approx. HKD 1,090



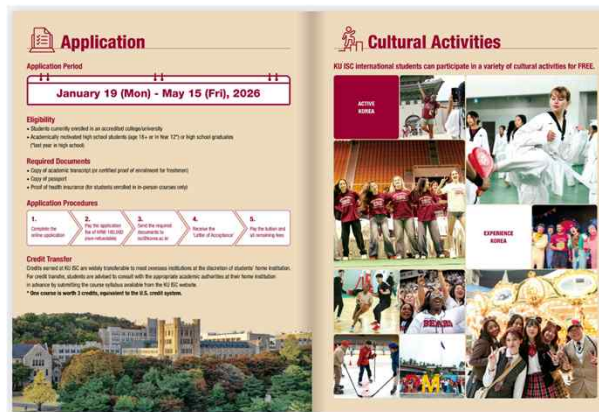
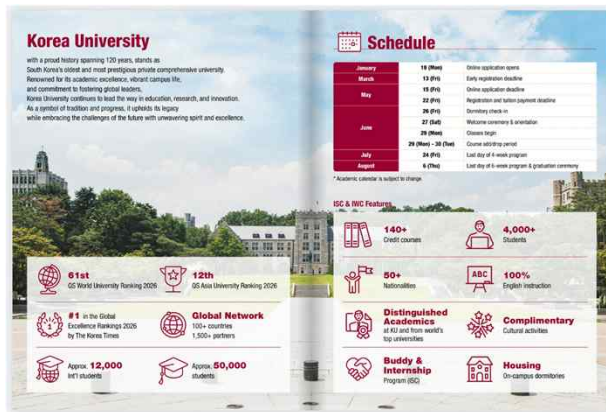
The poster features the letters 'KU' and 'ISC' in a large, stylized font. The 'K' and 'U' are filled with a maroon color, while the 'I' and 'S' are filled with a light beige color. The 'C' is filled with a maroon color. Inside the letters, there are images: a castle-like building for 'K', a globe for 'U', a clock tower for 'I', and a group of students for 'C'. Below the letters, the text '2026 KOREA UNIVERSITY INTERNATIONAL SUMMER CAMPUS' is written in white. At the bottom, there is a table with application and program periods, and a QR code with the word 'Website' below it.

Application Period	January 19 – May 15, 2026
Program Period	June 27 – July 24, 2026 (4 wks)
	June 27 – August 6, 2026 (6 wks)

Website

2026 International Summer Campus

Brochure



<https://ibook.korea.ac.kr/Viewer/LRTQ2L3SA4U4>



2026 International Summer Campus

Course List

6-week

- Creative Writing for Media
- Introduction to Creative Industries Entrepreneurship
- Korean Film and Society
- Language, Culture, and Society in Korea
- Media and Popular Culture in Korea
- Introduction to Korean Studies
- Structure of Korean

- Econometrics
- Intermediate Microeconomics
- Introduction to Microeconomics
- Money and Banking
- Political Economy
- Principles of Finance
- Statistics
- Introduction to Macroeconomics
- Intermediate Macroeconomics

- Abnormal Psychology
- Introduction to Psychology
- Cultural Psychology
- Consumer Behavior (Online only)

- Introduction to Artificial Intelligence
- Introduction to Computer Science
- Introduction to Machine Learning

- Big Data Analytics
- Calculus I
- Calculus II
- General Chemistry I
- Organic Chemistry
- Introduction to Contemporary Life Science
- Earth, Environment and Sustainability

- Organizational Behavior
- International Marketing (Online only)
- Introduction to Marketing
- Organization and Human Resource Management
- Strategic Management
- Introduction to Game Theory

- International Relations of East Asia
- North Korea: History, Politics, Society
- Understanding Korean Politics

- Beginning Korean I
- Beginning Korean II
- Intermediate Korean I
- Intermediate Korean II

2026 International Summer Campus

Course List

4-week

- Introduction to Global Development
- Introduction to Sociology
- Media, Art, Culture and Society
- Media and Popular Culture in Korea
- New Media and Communication
- Introduction to Korean History: A Regional Perspective
- Introduction to Hanja (Chinese characters in Korean)
- North Korean Culture and Everyday Life

- Beginning Korean I
- Beginning Korean II
- Intermediate Korean I

- Econometrics
- International Finance
- Principles of Finance
- Linear Algebra
- Statistics (Blended)

- Global Leadership and Management
- International Business
- Introduction to Marketing
- Strategic Management (Blended)
- Strategic Management

- Abnormal Psychology
- Culture, Identity, and Behavior: Applied Perspective (Blended)
- Introduction to Psychology
- Personality Psychology
- Social Psychology (Blended)
- Introduction to Brain Science

- Introduction to Programming with Python

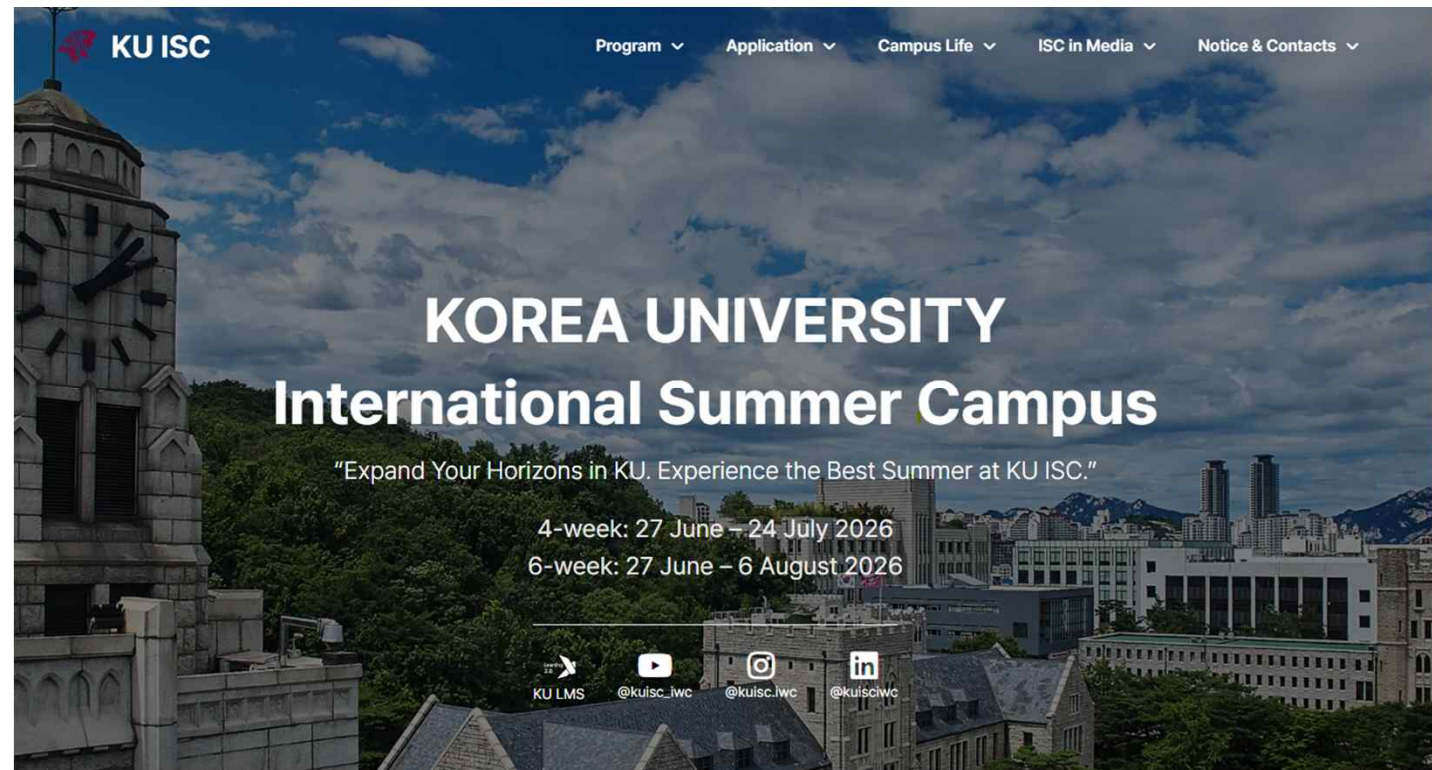
- General Biology I

2026 International Summer Campus

Website



summer.korea.ac.kr



2026 International Summer Campus

Website

ISC111B In-person Syllabus

Introduction to Marketing

👤 Tony C. Garrett (Korea University)

🕒 6-week P3 (13:10 – 14:50)

Business

ISC112 In-person

Linear Algebra

👤 Hongjoong Kim (Korea Unive

🕒 4-week P1 (9:00 – 11:30)

Engineering

ISC116 In-person Syllabus

Introduction to Korean History: A Regional Perspective

👤 Adrien Carbonnet (University of Leuven)

🕒 4-week P1 (9:00 – 11:30)

Humanities Korean Studies Social Science

ISC129A In-person

Strategic Management

👤 K. Praveen Parboteeah (University of Wisconsin-Whitewater)

🕒 6-week P2 (10:50 – 12:30)

Business



Introduction to Marketing

Tony C. Garrett (Korea University)

In-person

Business

COURSE CODE

ISC111B

CREDITS

3

PERIOD

6-week P3 (13:10 – 14:50)

[View Syllabus](#)

[Professor CV](#)

04 | Additional Information

Additional Information

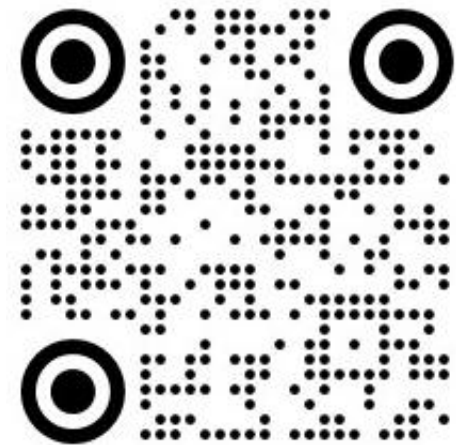
YouTube Channel



Korea University Int'l Summer & Winter Campus

@kuisc_iwc · 구독자 679명 · 동영상 93개

KU International Summer Campus: <https://summer.korea.ac.kr> ...더보기



@kuisc_iwc

Additional Information

YouTube Channel



Experience, Learn, and Grow – KU ISC Internship

조회수 130회 • 8일 전



Meet the Teaching Assistants of KU ISC 2025

조회수 159회 • 10일 전



Meet our buddies!

조회수 452회 • 12일 전



2025 KU ISC Cultural Activity Highlight

조회수 218회 • 13일 전



★2025 ISC Testimonial Video★

조회수 233회 • 2주 전



2025 KU ISC Welcome Orientation

조회수 323회 • 1개월 전



2025 KU International Summer Campus Welcome Ceremony & Orientation

조회수 912회 • 2개월 전



2024-25 KU IWC Cultural Activity Highlight

조회수 189회 • 7개월 전

Additional Information

Instagram

< **kuisc.iwc**



KU ISC&IWC 국제동하계대학

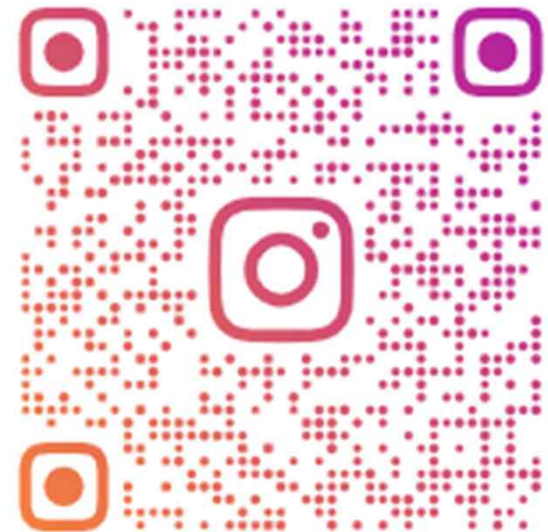
521
posts

5,673
followers

73
following

Korea Univ. Int'l Summer & Winter Campus

...



@kuisc.iwc

Additional Information

LinkedIn



- ✓ Stay updated on future programs and opportunities
- ✓ Connect with fellow alumni and expand your network
- ✓ Share your experience and insights with the community

For more information

summer.korea.ac.kr

Email

isc@korea.ac.kr

Instagram



[@kuisc.iwc](https://www.instagram.com/kuisc.iwc)

LinkedIn



[company/kuisciw](https://www.linkedin.com/company/kuisciw)

*Thank
You!*

